

The background is a full-page image of a marbled surface, likely stone or marble, with flowing, wavy patterns in shades of cream, beige, and light brown. A thin, dark rectangular border is centered on the page, enclosing the text.

# WALTON HOUSE

RESIDENCES

---

Set in the heart of Knightsbridge,  
Walton House Residences is a stunning  
collection of apartments meticulously  
designed by Mdesign London.

---

THE GRAND APARTMENT

APARTMENT 2

APARTMENT 3

APARTMENT 4

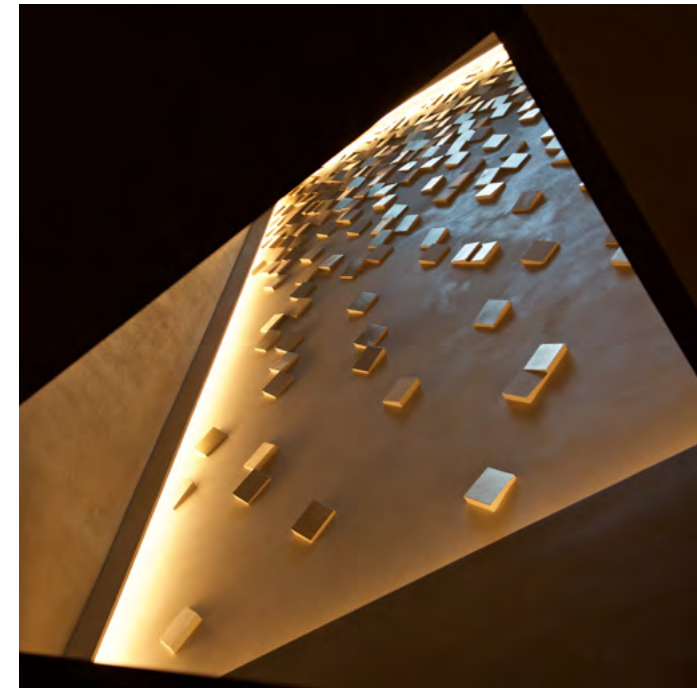
MDESIGN LONDON

CONTACT

# THE GRAND APARTMENT

6,728 SQ. FT.

625.1 SQ. M.



---

This exquisite triplex apartment has its own entrance on Walton Street that leads directly to a private ground floor lobby with stunning architectural features. A 6-person lift, solely for the use of the grand apartment, provides access to each floor and has been beautifully crafted with a polished plaster finish to the central stair core lift shaft.

Offering exceptional living space, including an ambassadorial reception room, four elegant bedroom suites and a beautiful terrace overlooking London, the apartment also benefits from its own exclusive leisure floor including a 13-meter swimming pool, cinema room, bar and lounge area.

---





ENTRANCE HALL  
Ground Floor





RECEPTION & DINING ROOM  
First Floor





KITCHEN  
First Floor





MASTER BEDROOM SUITE  
Third Floor





MASTER ENSUITE  
Third Floor





BAR LOUNGE  
Leisure floor





CINEMA  
Leisure floor



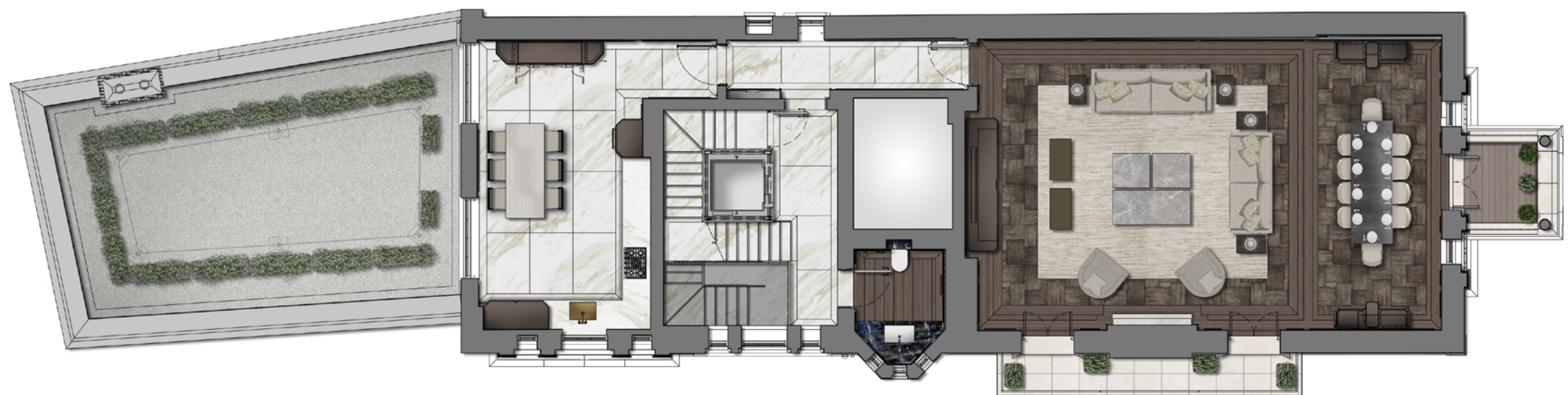


PRIVATE SWIMMING POOL  
AND STEAM ROOM  
Leisure floor





BASEMENT - LEISURE FLOOR



FIRST FLOOR





SECOND FLOOR



THIRD FLOOR







# APARTMENT 2

2,644 SQ. FT.

245.6 SQ. M.



---

An exceptionally designed duplex apartment that benefits from its own private entrance.

Beautifully proportioned, the property includes three ensuite bedrooms and a magnificent reception-dining room.

---





RECEPTION & DINING ROOM  
Ground Floor





KITCHEN  
Ground Floor





MASTER BEDROOM SUITE  
Ground Floor





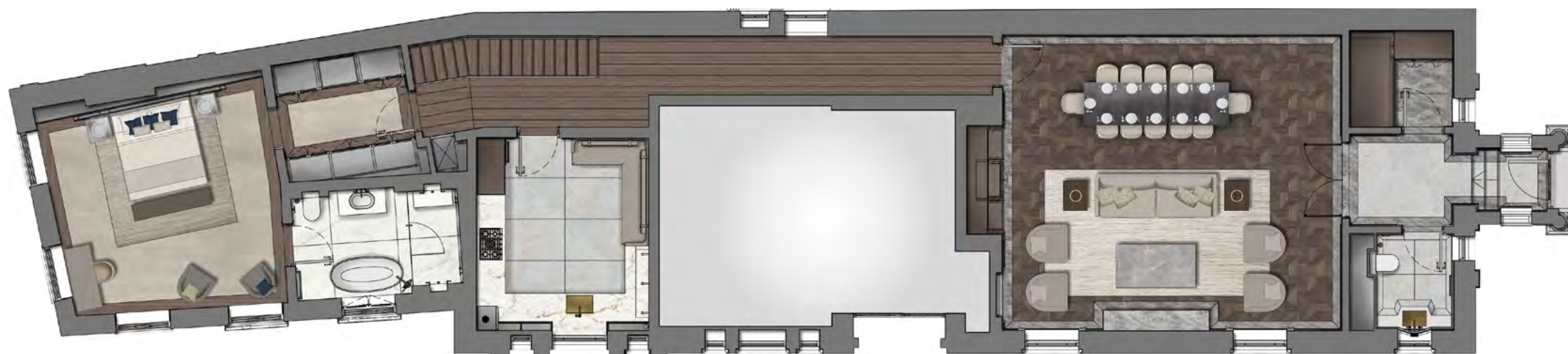
---

MASTER ENSUITE  
Ground Floor





LOWER GROUND FLOOR



GROUND FLOOR



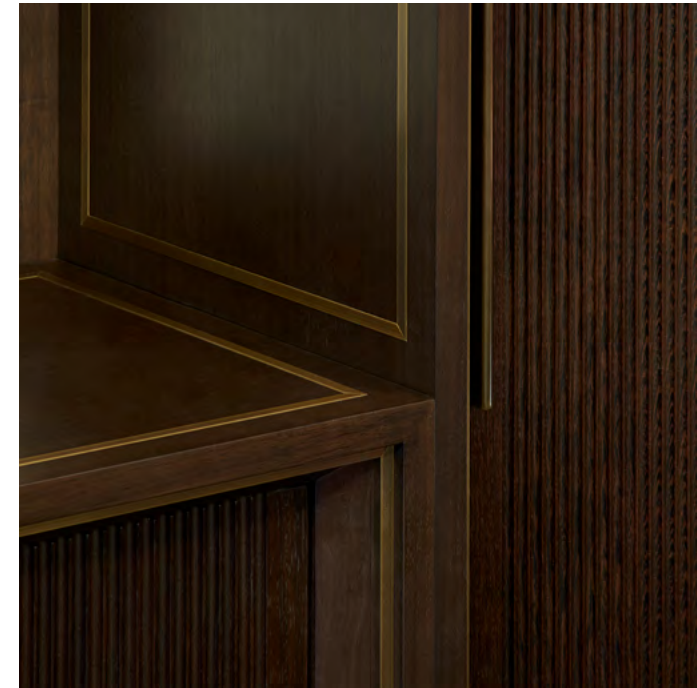




# APARTMENT 3

976 SQ. FT.

90.7 SQ. M.



Located on the lower ground floor level, this two-bedroom, two-bathroom apartment has been completely refurbished and offers an open-plan kitchen-living area with integrated storage in the hallway.






---

LOWER GROUND FLOOR

External area is not demised



# APARTMENT 4

942 SQ.FT.

87.5 SQ. M.



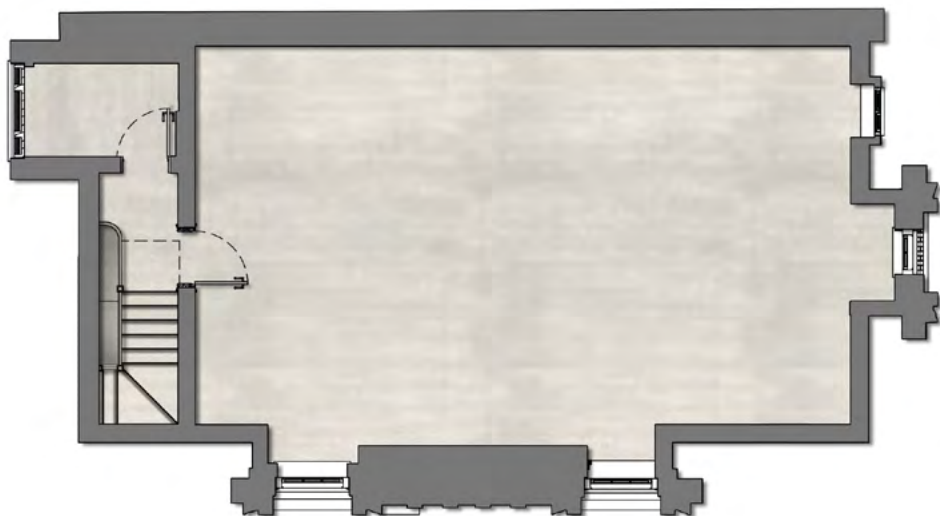
---

The top-floor apartment is being offered as a white box opportunity, with exposed ceilings providing a central ceiling height of circa 4.5m.

A stunning one-bedroom scheme has been designed by Mdesign London and can be implemented by the purchaser should they wish.

---





FOURTH FLOOR  
White box



FOURTH FLOOR  
Optional one bedroom  
scheme by Mdesign





## THE LOCATION

---

Set on the corner of Pont Street and Walton Street, Walton House Residences is located in one of London's most sought-after neighbourhoods, Knightsbridge.

The property enjoys easy access to some of London's most iconic landmarks such as Hyde Park, the Mandarin Oriental and Buckingham Palace.

Situated in close proximity to some of the city's finest restaurants and boutiques, Harrods, Harvey Nichols and Sloane Street are only minutes from your door.

---







01.



02.



01. DAPHNES  
Renowned Italian restaurant  
and conservatory in Chelsea  
7 minute walk

2. HARVEY NICHOLS  
Exclusive Knightsbridge  
department store  
8 minute walk

03. ROYAL ALBERT HALL  
Historic cultural venue  
and concert hall  
18 minute walk

04. SLOANE STREET  
London's most desirable  
shopping destination  
4 minute walk

05. HARRODS  
Iconic luxury department  
store and food hall  
2 minute walk



03.



04.



05.



# MDESIGN LONDON

## THE DESIGNER

---

Responsible for the creation of some of the world's finest residences, Mdesign London couples unbounded creativity with a refined and meticulous approach.

Innovating at the intersection of architecture, art and design, every residence is unique, and the product of a remarkable vision that is carried through from conception to completion.

Walton House Residences reflects our on-going commitment to pushing the boundaries of design and has resulted in a collection of exceptional homes that are the epitome of modern, luxury living.

---





---

CONTACT

[sales@mdesignlondon.com](mailto:sales@mdesignlondon.com)  
+44 (0) 20 7258 8500

---

Disclaimer:  
Mdesign and their clients and any joint agents give notice that: 1: They are not authorised to make or give any representations or warranties in relation to the property either here or elsewhere, either on their own behalf or on behalf of their client or otherwise. They assume no responsibility for any statement that may be made in these particulars. These particulars do not form part of any offer or contract and must not be relied upon as statements or representations of fact. 2: Any areas, measurements or distances are approximate. The text, images and plans are for guidance only and are not necessarily comprehensive. It should not be assumed that the property has all necessary planning, building regulation or other consents and Mdesign have not tested any services, equipment or facilities. Purchasers must satisfy themselves by inspection or otherwise.



